

Fitting Instructions



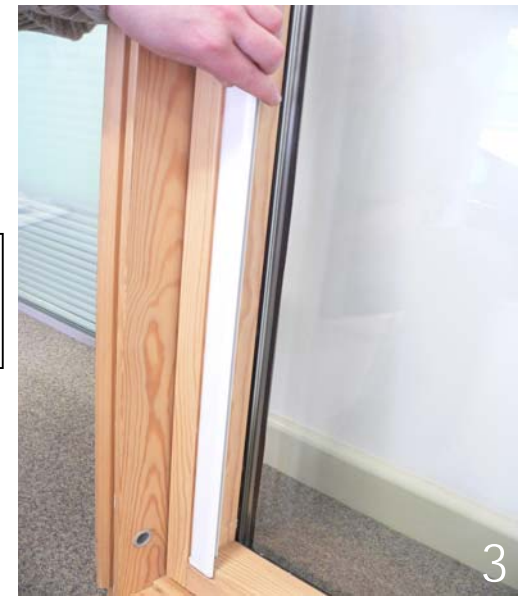
Components required for assembly.



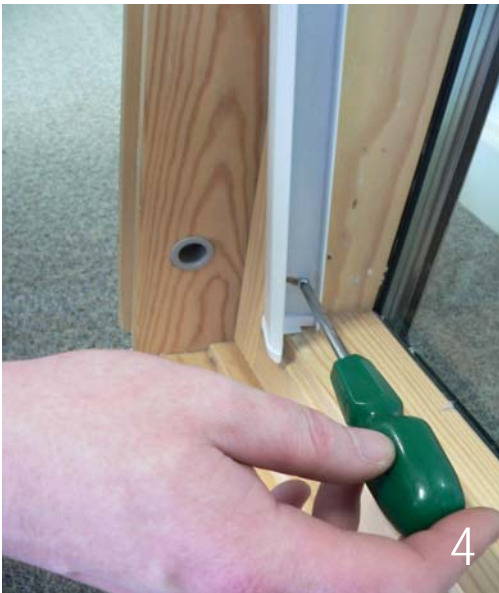
Remove any existing brackets from the window frame.



N.B On Velux windows, remove bracket caps.



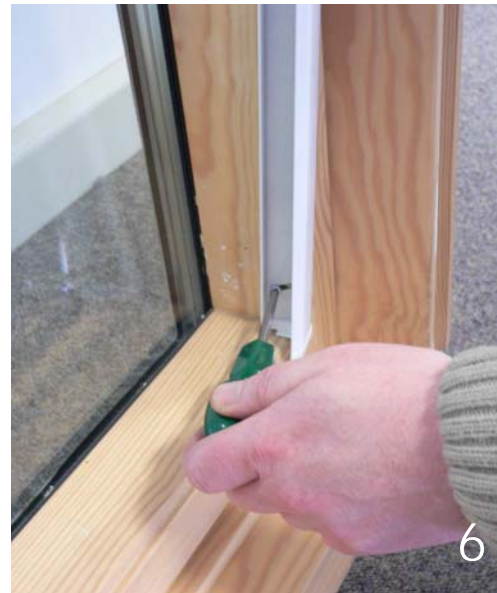
Place L/H side channel against window frame.



Fix L/H side channel to the window frame using the lower part of side channel.



Place R/H side channel against window frame.



Fix R/H side channel to the window frame using the lower part of side channel.



Gently pull the side channels away from the top of the window frame.



8

Slide the bottom bar onto the top of side channels ensuring the end cap brake is correctly located on either side.



9

Locate roller tube onto the top of the side channels.



10

Remove spring tension pin.



11

Place blind against window & fit using remaining screws.

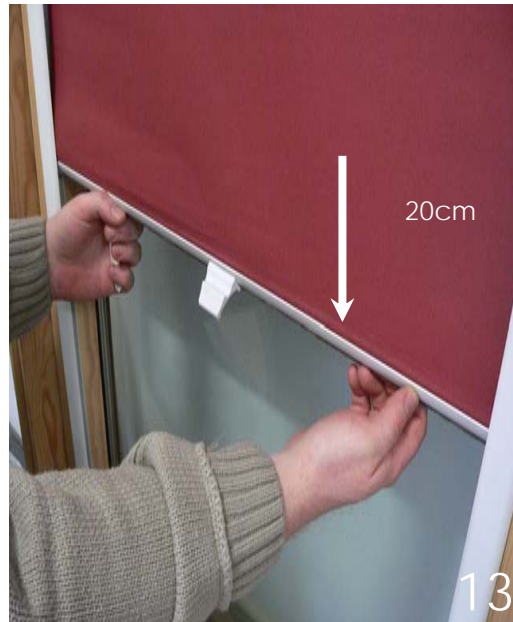


12a



12b

Clip on plastic mitre caps.



13

Pull down blind 20cm.



14

Check bottom bar for twisting. If so, extend bottom bar end caps to remove slack.



15

To operate blind push handle to release brake and adjust to position required.